

203 Super Flow Ceramic Fluid

203 Super Flow Ceramic Fluid is a two component solvent free epoxy metal repair fluid designed for use on a wide range of metallic surfaces subject to cavitation, low particulate abrasion and impact.

The product is suitable for emergency repairs or part of planned maintenance to equipment such as worn impellers, damaged valves, damaged pump casings, eroded pipe work, A-frames and rudders.

The material once cured has a high gloss finish ensuring flow efficiency gains for the equipment and components coated in the material.



Main characteristics -

- Two component
- Solvent free epoxy
- Usable life 20 minutes (20°C)
- Touch dry 90 mins (20°C)
- Full cure 6 days (20°C)
- 100 Rockwell R Hardness (Once fully cured)
- Applied by brush or applicator tool
- Available in 1kg, 3kg, 30kg pack sizes

Mechanical Properties –

Adhesion

Tensile Shear to ASTM D1002 187kg/cm² (2650psi)

Compressive strength

Tested to ASTM D 695 735kg/ cm² (10,450psi)

Corrosion Resistance

Tested to ASTM B117 Minimum 5000 hours

Flexural Strength

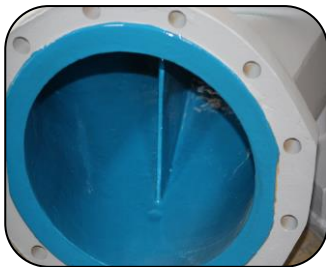
Tested to ASTM D790 570kg/cm² (8100psi)

Heat Resistance

Suitable for water immersion up to 70°C and intermittent contact with steam up to 120°. Dry heat resistance up to 150°C.



Salt water pump casing



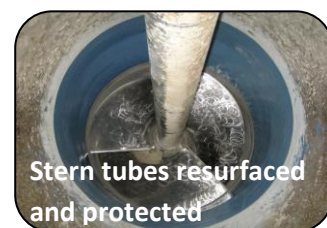
Hot air fan, abrasive blast cleaned and coated with 203 Super Flow



Rudders resurfaced and protected



Process pipework abrasive blast cleaned and coated with 203 Super Flow



Stern tubes resurfaced and protected

